

VISITOR INFORMATION

CONFERENCE/MEETING CONVENTION PLANNING

Park County welcomes you and is pleased to extend our famous western hospitality to help you plan your event.

- The Cody Country Chamber of Commerce, located at 836 Sheridan Avenue, can provide convention bags, badges, collector pins, medallions and the best advice on where to go and what to do while in the area.
Call (307) 587-2777.
- The City of Cody office, located at 1338 Rumsey, is cooperative in assisting with special requests such as parades or using city parks and facilities.
Call (307) 527-7511.
- The Powell Valley Chamber of Commerce, located at 111 S. Day Street, provides welcome bags, discount coupons and assists with plans and activities in Powell.
Call (307) 754-3494.
- Meeteetse Visitor Information Center, located at 2005 Warren Avenue, can provide for all your meeting and convention needs.
Call (307) 868-2454.
- The Park County Travel Council, located at 836 Sheridan Avenue, is available to assist with touring facilities, coordinating arrangements and assuring your event is a success.
Call (307) 587-2297.

WHAT TO WEAR

Park County has warm summer temperatures in the day time with cool nights. Lightweight jackets are usually required after sunset. Spring and fall have a variety of weather conditions possible from Indian summer to snowfall. Being prepared for almost any weather will assure a pleasant experience.

LOCATION

Cody is located in the northwest corner of Wyoming, in what is known as Buffalo Bill's Yellowstone Country. Powell is located 22 miles northeast of Cody and Meeteetse is located 30 miles south.

Mileage from Cody to:

Yellowstone National Park	52 Miles
Billings, Montana	110 Miles
Casper, Wyoming	215 Miles
Cheyenne, Wyoming	415 Miles
Denver, Colorado	492 Miles
Rapid City, South Dakota	460 Miles
Salt Lake City, Utah	445 Miles
Sheridan, Wyoming	175 Miles

PARK COUNTY GOVERNMENT

Cody

Bureau of Land Management	(307) 578-5900
Bureau of Reclamation	(307) 527-4200
City of Cody	(307) 527-7511
Cody Chamber of Commerce	(307) 587-2777
Park County Courthouse	(307) 527-8500
Wyoming Game & Fish	(307) 527-7125
Shoshone National Forest	(307) 527-6241

Powell

City of Powell	(307) 754-5106
Powell Chamber of Commerce	(307) 754-3494

Meeteetse

City of Meeteetse	(307) 868-2278
Meeteetse Visitor Information Center	(307) 868-2454

ELECTED OFFICIALS

Governor Matt Mead	(307) 777-7434
Senator Mike Enzi	(307) 527-9444
Senator John Barraso	(307) 672-6456
Representative Cynthia Lummis	(307) 261-6595
Park County Commissioners	(307) 527-8500
Mayor of Cody	(307) 527-7511
Mayor of Powell	(307) 754-5106
Mayor of Meeteetse	(307) 868-2278

VISITOR SERVICES

AIRLINES

Airline service at Yellowstone Regional Airport is provided by the following airlines:

SkyWest/Delta Connections	1-800-221-1212
United Express	1-800-241-6522

AREA TRAVEL AGENTS

Powell

Omega World Travel	(307) 754-5138
Absaroka Cruise and Travel	(307) 754-5870

BANKING SERVICES

The following institutions offer financial services and automatic teller machines:

Big Horn Federal	Cody	(307) 587-5521
	Powell	(307) 754-9501
Bank of the West	Cody	(307) 587-2243
	Powell	(307) 754-2281
	Meeteetse	(307) 868-2521
Cody Schools Credit Un.	Cody	(307) 587-2274
1st Nat'l Bank & Trust	Cody	(307) 587-3800
	Powell	(307) 754-2201
Pinnacle Bank	Cody	(307) 527-7186
Sunlight Fed. Credit Un.	Cody	(307) 587-4915
US Bank	Cody	(307) 527-9621
Wells Fargo Bank	Cody	(307) 587-4237
	Powell	(307) 754-0145

HOSPITALS

West Park Hospital	(307) 527-7501
707 Sheridan Ave., Cody	
Urgent Care Clinic	(307) 587 7207
424 Yellowstone Ave., Cody	
Powell Valley Hospital	(307) 754-2267
777 Avenue H., Powell	

CAR RENTALS

Avis Rent-A-Car	(307) 587-4082
Budget Rent-A-Car	(307) 587-6066
Dollar Rent-A-Car	(307) 587-3604
Hertz Rent-A-Car	(307) 587-2914
Thrifty Rent-A-Car	(307) 587-8855

GROUND TRANSPORTATION, BUS, TAXI AND LIMOUSINE SERVICES

Cody Cab	(307) 272-8364
LP Transportation	(307) 587-2272
Magic Carpet Limo Service	(307) 527-7043
Phidippides Shuttle	(307) 527-6789

TOURS

Cody

Choice Aviation	(307) 587-9262
Cody Trolley Tours	(307) 527-7043
Grub Steak Expeditions & Tours	(307) 527-6316
Hidden Treasure Charters	(307) 899-1401
National Park Tours	(307) 527-7208
Red Canyon Wild Mustang Tours	(307) 587-6988
Spirit Mountain Aviation	(307) 587-6732
Wyoming Touring Adventures	(307) 587-5136
Yellowstone Wildlife & Photo Tours	(307) 587-6988

Powell

Farm and Ranch Tours	(307) 754-3494
----------------------	----------------

Meeteetse

Arland Tour	(307) 868-2423
Kirwin Excursion	(307) 868-2423

MEDIA

Newspapers

Cody Enterprise	(307) 587-2231
Powell Tribune	(307) 754-2221

Radio

Big Horn Radio Network	(307) 578-5000
<i>KODI/KCGL/KZMQ/KTAG</i>	
KPOW	(307) 754-5183
Appaloosa Broadcasting	(307) 764-3771

ACTIVITIES & ATTRACTIONS

OUTDOOR RECREATION

Cody

Absaroka Bikes	(307) 527-5566
Cedar Mountain Trail Rides	(307) 527-4966
City Park—Miniature Golf	(307) 587-0400
Cody Country Snowmobile Association	(307) 587-4455
Cody Shooting Complex	(307) 587-5236
Gradient Mountain Sports	(307) 587-4659
Hidden Treasure Charters	(307) 899-1401
Northfork Anglers	(307) 527-7274
North Fork Nordic Trails	(307) 527-7701
Olive Glenn Country Club & Golf Course	(307) 587-5551
Red Canyon River Trips	(307) 587-6988
River Runners	(307) 527-7238
Shoshone National Forest	(307) 527-6241
Sleeping Giant Ski Area	(307) 527-8988
Sunlight Sports	(307) 587-9517
Wyoming River Trips	(307) 587-6661
Yellowstone National Park	(307) 344-7381

Meeteetse

Meeteetse Archery Range	(307) 868-2603
Wood River Ski Touring Park	(307) 868-2603

Powell

Powell Golf Course	(307) 754-7259
--------------------	----------------

INDOOR ACTIVITIES

Cody

Big Horn Cinemas	(307) 587-8009
Paul Stock Aquatics & Recreation Center	(307) 587-0400
Riley Ice Arena	(307) 587-1681
Super Bowl (bowling alley)	(307) 587-5310

Powell

Classic Lanes (bowling alley)	(307) 754-2422
Vali Cinema (drive-in)	(307) 754-4211

FINE ART GALLERIES

Big Horn Galleries	(307) 527-7587
Cody Country Art League	(307) 587-3597
Cody Fine Art	(307) 527-5380
Harry Jackson Studios	(307) 587-5508
Mountain Trails Gallery	(307) 527-9097
Open Range Images	(307) 587-8870
Simpson Gallagher Gallery	(307) 587-4022
Traces of Light	(307) 527-6912

ATTRACTIONS, MUSEUMS AND SPECIAL PLACES

Cody

Buffalo Bill Dam Visitor Center	(307) 527-6076
Buffalo Bill Historical Center	(307) 587-4771
Cody Mural Visitor Center	(307) 587-3290
Cody Nite Rodeo	(307) 587-5155
Miniature Village & Museum	(307) 587-5362
Old Trail Town and Museum	(307) 587-5302
Pahaska Tepee Lodge	(307) 527-7701
Park County Library	(307) 527-1880
Vietnam Veteran's Memorial	(307) 587-0400

Powell

Heart Mountain Relocation Center	(307) 250-5542
Homesteader Museum	(307) 754-9481

Meeteetse

Belden/Meeteetse Museum	(307) 868-2423
Kirwin Ghost Town	(307) 868-2423
Meeteetse Bank Museum	(307) 868-2423

ENTERTAINMENT

The Cody Gunfighters. The gunfights are staged Monday through Saturday at 6:00 pm at the Irma Hotel, June through September. This event is free.

Dan Miller's Cowboy Music Revue. Featured in USA Today, this award-winning music variety show is now in its seventh season. Family entertainment offering Americana, bluegrass, songs of the American West, and cowboy poetry. Performances Monday through Saturday, mid-May thru September at 8:00 p.m. at the historic Cody Theatre, 1171 Sheridan Avenue. Tickets are \$15.00.

The Cody Cattle Company. Lively show featuring traditional cowboy music in a family-friendly setting. The evening includes an all-you-can-eat chuckwagon dinner. Two shows nightly at 6:30 and 8:30, June through September. Tickets are \$12 for the show and \$12 for the meal.

Concerts in the Park. Cody's City Park offers a free summer concert series with a variety of entertainers. Friday evenings from 6-8 pm in July and August.

MEETING FACILITIES

CONVENTION CENTERS

Cody

Cody Auditorium (307) 587-0400
Holiday Inn Convention Center (307) 587-5555
Victor J. Riley Ice Arena (307) 587-1681
& Community Event Center

Powell

The Commons (307) 754-3494

OTHER MEETING FACILITIES

Cody

Buffalo Bill Historical Center (307) 587-4771
up to 700 people
Cody Club Room (307) 587-0400
up to 130 people
Park County Building (307) 527-8510
up to 80 people
Park County Library (307) 527-1880
up to 100 people
West Park Hospital (307) 527-7501
(videoconferencing available)

Powell

Northwest College (307) 754-6062
Trapper Room *up to 60 people*
Student Center *up to 200 people*
Technology Center *up to 26 people*
Powell Library (307) 754-8288
up to 45 people

THEATRE TYPE SPACES

Cody

Wynona Thompson Auditorium (307) 587-4251
up to 1000 people
Coe Auditorium (BBHC) (307) 587-4771
up to 150 people
Cody Theatre (307) 272-7855
up to 300 people

Powell

Northwest College Fagerberg Lecture Hall (307) 754-6062
up to 160 people
Powell High School Auditorium (307) 754-2215
up to 1050 people

RESTAURANTS WITH PRIVATE MEETING SPACE

Cody

Cassie's Supper Club (307) 527-5500
up to 400 people
Cody Cattle Company (307) 272-5770
up to 500
Olive Glenn Country Club (307) 587-5308
up to 100 people
Sunset House (307) 587-2257
up to 70 people

Powell

Hansel & Gretel's (307) 754-2191
up to 70 people
Lamplighter (307) 754-2226
up to 50 people

Meeteetse

Elkhorn (307) 868-9245
up to 50 people
Lucille's Café (307) 868-2250
up to 50 people
Outlaw Parlor/Cowboy Bar (307) 868-2585
up to 25 people

LODGING PROPERTIES WITH MEETING SPACES

AmericInn Lodge & Suites (307) 587-7716
up to 20 people (available seasonally)
Chamberlin Inn (307) 587-0202
up to 30 people
Cody Legacy Inn (307) 587-6067
up to 40 people
Holiday Inn (307) 587-5555
up to 300 people
Irma Hotel (307) 587-4221
up to 90 people
The Cody Hotel (307) 587-5915
up to 100 people

MEETING FACILITIES cont.

PUBLIC SPACES

Cody

City Park and band shell (307) 587-0400
Canal Park (307) 587-0400
Beck Lake Park (307) 587-0400

Powell

Park County Fairgrounds (307) 754-5421
Plaza Diane (307) 754-5106
(outdoor arena with stage)

Meeteetse

Oasis Motel (307) 868-2551
outdoor by the river

PRIVATE CLUBS WITH MEETING SPACE

Cody

Eagles Lodge (307) 587-4573
up to 300 people
Elks Lodge (307) 587-2533
up to 150 people
VFW (307) 587-3671
up to 180 people

Powell

VFW (307) 754-9241
up to 200 people
American Legion (307) 754-3411
up to 150 people
Eagles Lodge (307) 754-4242
up to 200 people
Elks Lodge (307) 754-2995
up to 125 people

MOUNTAIN LOCATION MEETING SPACE

Northwest College Field Station (307) 754-6219
up to 70 people
Oasis Motel (outdoor area) (307) 868-2551
Peg Shreve Lodge (307) 587-9227
up to 200 people
Mammoth Hot Springs Hotel (307) 344-7311
meetings only

HOLIDAY INN CONVENTION CENTER

1701 Sheridan Ave.
P O Box 30
Cody, WY 82414
Toll-Free: 1-800-527-5544
Tel: 1-307-5875555
Fax: 1-307-5277757
Email: blair@blairhotels.com
Website: www.blairhotels.com



The Buffalo Bill Village Resort, Cody's only downtown full service complex, offers three hotels totaling 350 rooms; conference facilities with breakdown ability, totaling 9,245 square feet with the ability to handle groups of 15 to 350; three restaurants, swimming, and activities such as white water and scenic river rafting, horseback riding, and day tours of Yellowstone National Park.

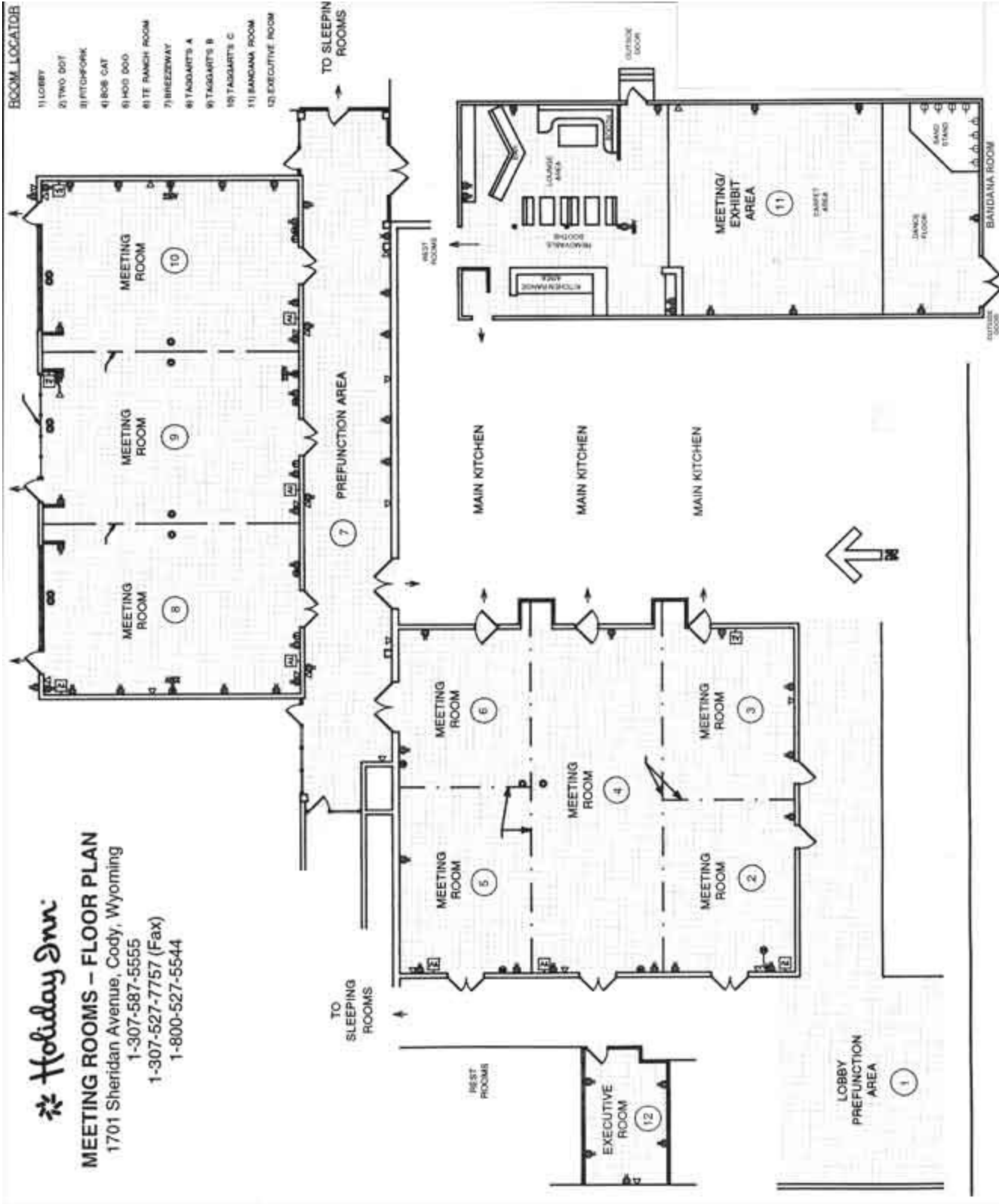
They welcome site inspections and the opportunity to introduce you to their certified conference

Room name	Sq. Ft.	Dimensions	Ceiling	Reception	Banquet	Theatre	Classroom
Ballroom	2,750	55'x50'	10'	500	350	400	200
Bob Cat	950	19'x50'	10'	150	75	100	50
Hoo Doo, Two Dot (each)	900	18'x50'	10'	150	75	100	50
Pitchfork, T E Ranch	450	18'x25'	10'	75	40	50	25
Taggarts	2,775	75'x37'	11'	450	300	350	75
1.2.3	925	37'x25'	11'	125	80	80	40
Bandana	2,100	70'x30'	10'	125	80	150	75
Breezeway	1,800	90'x20'	11'	100	-	-	-



MEETING ROOMS - FLOOR PLAN

1701 Sheridan Avenue, Cody, Wyoming
1-307-587-5555
1-307-527-7757 (Fax)
1-800-527-5544



BUFFALO BILL HISTORICAL CENTER

720 Sheridan Avenue Cody, WY 82414

Phone (307) 587-4771

www.bbhc.org

FACILITY	USE	MAXIMUM OCCUPANCY
Boardroom	Meeting room – traditional “boardroom” style	Seats 25 around boardroom table – other chairs <u>not</u> around table can be setup (approx. 40 total)
Adult Classroom	Meeting room – tables and chairs in classrooms style that can be moved around	Seating maximum 40
Education Class-rooms 1 & 2	Meeting room – tables and chairs in classroom style that can be moved around	These rooms can be separate or divider wall removed for larger room. Seating maximum 50
Cody Firearms Museum Breezeway –	Dinner and reception space	Dinner - 150 maximum
Coe Auditorium	Theater Seating	Seating maximum 150
Greever/Braun Gardens	Sculpture gardens with seating and tent availability.	Dinner – 100 maximum Reception – 300 maximum
Draper Museum of Natural History Photography Gallery	Dinner and reception space	Dinner – 200 maximum Reception – 300 maximum
Draper Museum of Natural History Lower Gallery	Dinner and reception space – only used for special purposes	Dinner – 100 maximum Reception – 200 maximum
Robbie Powwow Garden	Outdoor stage / amphitheater and restrooms available	Maximum capacity approx. 700 people

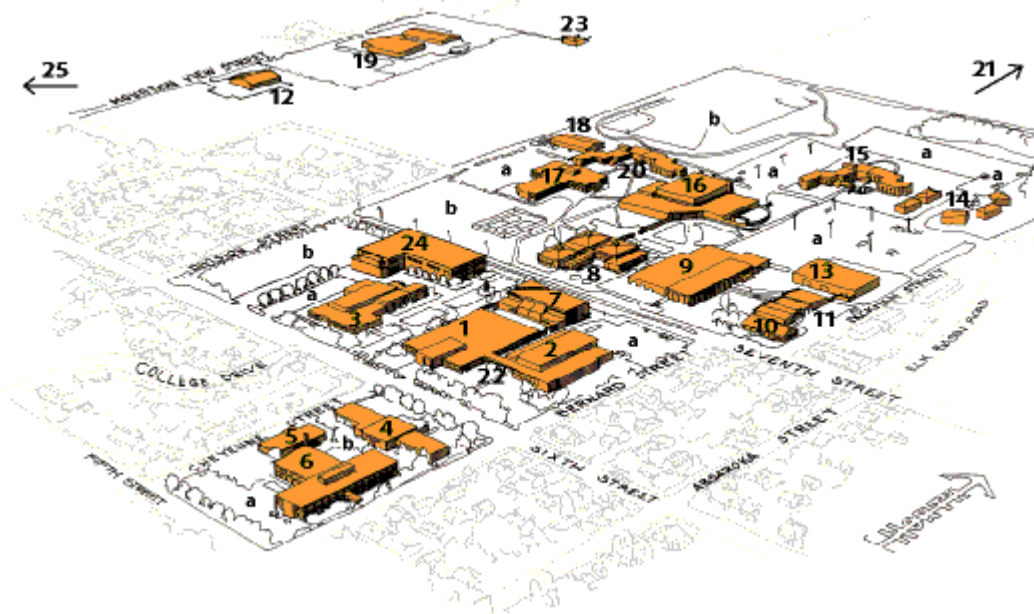
BUFFALO BILL HISTORICAL CENTER Cont.

MUSEUM POLICIES

- * Museum Staff has authority over all activities on museum grounds.
- * Fundraisers (other than in conjunction with the Buffalo Bill Historical Center) and political events will not be allowed. Multi-denominational religious events may be allowed under certain circumstances.
- * The organization and/or contact person will be responsible for any damages that may occur to floors, carpets, walls or collection material as a result of the event. The organization will be billed for replacement, cleaning, and repairs made.
- * The museum is a Smoke Free Building. Smokers are invited to use the Greever and Braun outdoor sculpture gardens.
- * Charging for admission and concessions and the selling of goods or other profit making ventures are not allowed at museum events. Any exceptions must have museum management approval.
- * Flower arrangements are allowed when provided by a recognized florist and must be approved by Museum Events Coordinator. No candles or balloons are allowed.
- * Posters, banners, or other items may not be hung either on the walls or from the ceiling.
- * Audio-visual equipment may be provided to the Organization/Group, provided the museum owns the necessary equipment, and that it is not previously reserved or required at any other museum related event. If equipment requires the museum A/V technician to operate, the Organization /Group will be billed for that employee's time.
- * Music and other entertainment requests are considered on a per event basis and must be approved by the Museum Events Coordinator.
- * Museum personnel reserve the right to request the removal of person(s) engaging in improper conduct.
- * For security purposes, we reserve the right to inspect bags and briefcases on entry or exit from the Center.
- * Our in-house caterer must provide all food and beverage. Any "donated" beverage or food must be coordinated through and served by our in-house caterer. Any sponsorships of your event must have prior approval of Museum Events Coordinator.

NORTHWEST COLLEGE

213 W. 6th Powell, Wyoming (307) 754-6000 www.northwestcollege.org



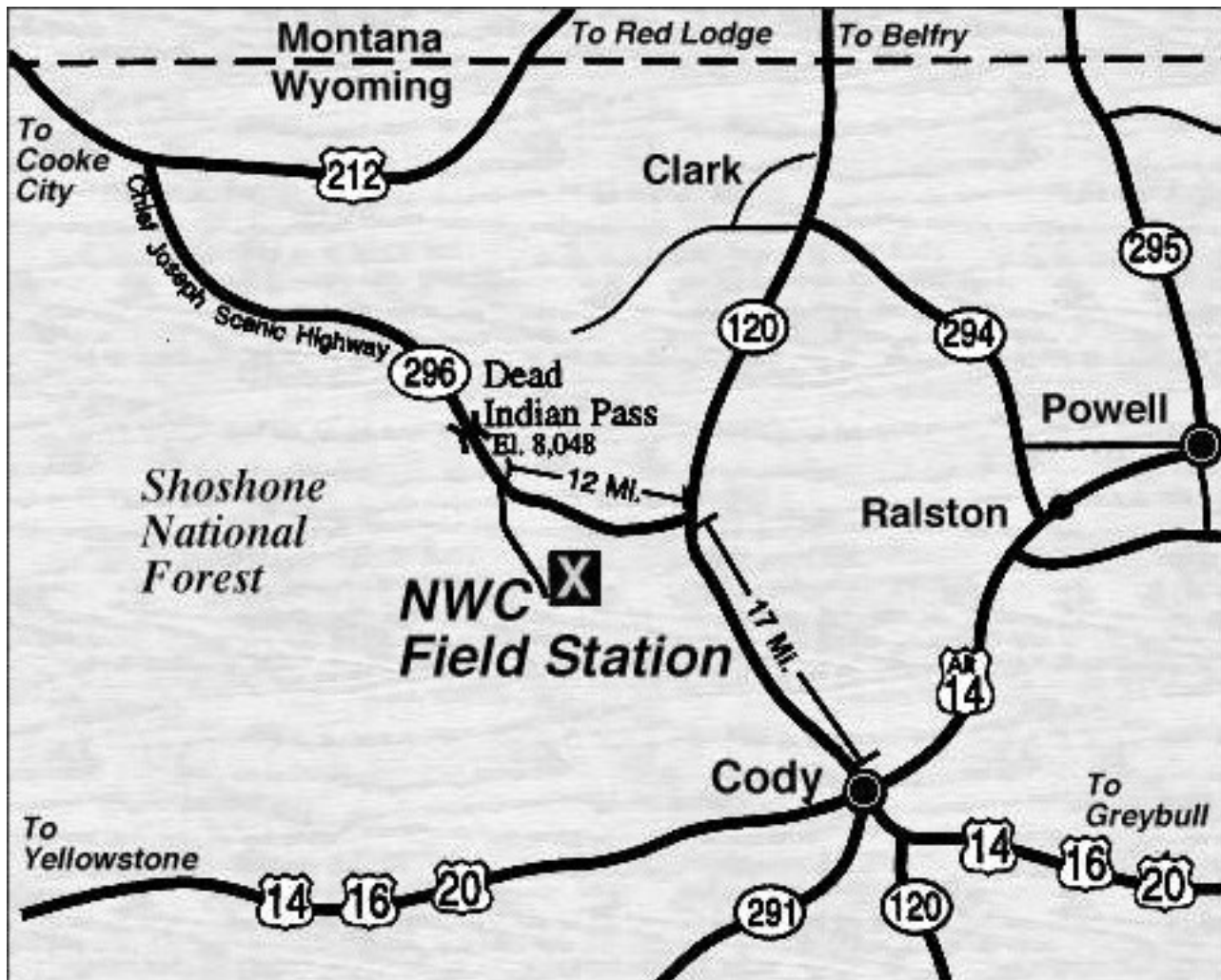
- | | |
|--|--|
| 1 Orendorff Building — ORB | 14 Trapper Village Main Apartments — TV |
| 2 Johnson Fitness Center — JFC | 15 Ashley Hall — ASH |
| 3 Nelson Performing Arts Center — NPA | 16 Cabre Building — CB |
| 4 Colter Hall / Student Success Center — CH | 17 Lewis and Clark Hall — LC |
| 5 Frisby Building — FRS | 18 Vehicle Maintenance |
| 6 Bridger Hall — BRI | 19 Equine Center — EC |
| 7 Hinckley Library / Greenhouse — HL | 20 Cody Hall — CODH |
| 8 DeWitt Student Center / Trapper Room — DSC | 21 Stock Agriculture Pavilion — SAP
(1.5 miles north) |
| 9 Fagerberg Building — FAB | 22 Moyer Building — MB |
| 10 Child Care Center — CCC | 23 Observatory |
| 11 Nursing Building — NU | 24 Science and Mathematics Building — SM |
| 11 Workforce Alliance Center — WAC | 25 West Campus — WC |
| 12 Physical Plant — PP | a Parking |
| 13 Oliver Building — OLB | b Activity Area |

NORTHWEST COLLEGE FIELD STATION

The Northwest College A.L. Mickelson Field Station

The Northwest College A.L. Mickelson Field Station is a comfortable and attractive mountain retreat on approximately 36 acres of wilderness. Surrounded by Shoshone National Forest, it is a rugged countryside, full of plant and animal life. The facility is winterized for year-round use.

Just 55 miles from the northeast gate of Yellowstone Park, 50 miles from Northwest College campus and 30 miles from Cody, Wyoming, our field station provides a unique learning environment for Northwest College students, faculty, staff, and service area residents. It is also available to serve users who are not associated with Northwest College but who have distinct and legitimate educational, cultural or recreational purposes which do not conflict with the natural and historic learning environment.



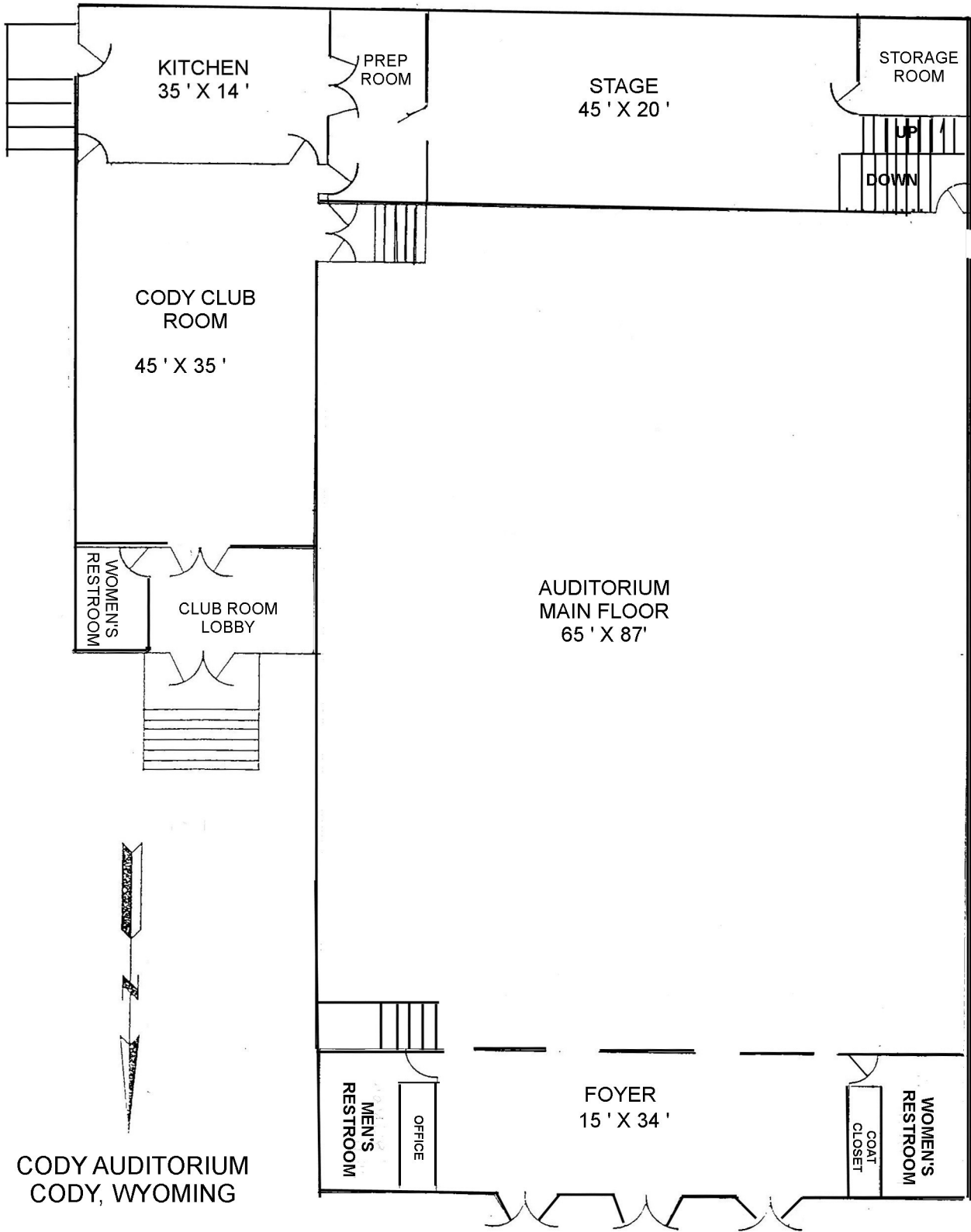
CODY AUDITORIUM & CODY CLUB ROOM

1240 Beck Avenue
Cody, WY 82414
(307) 587-3247
(307) 527-7511



Arena Dimensions:	Main Hall 65' x 87' 5,655 sq. ft. Club Room 45'x35' 1,575 sq. ft.
Arena Capacity:	Main Hall - 320 Club Room—130
Food Service:	Large Catering Kitchen
Convention Booth Equipment:	Pipe and Drape available
Other:	Table and chair rental through City of Cody (must reserve in advance) Sound System, Electric service

CODY AUDITORIUM & CODY CLUB ROOM cont.



PARK COUNTY COMPLEX

**1501 Stampede Avenue
Cody, WY 82414
(307) 527-8510**



Meeting rooms available.

For information, availability and costs, call (307) 527-1830.